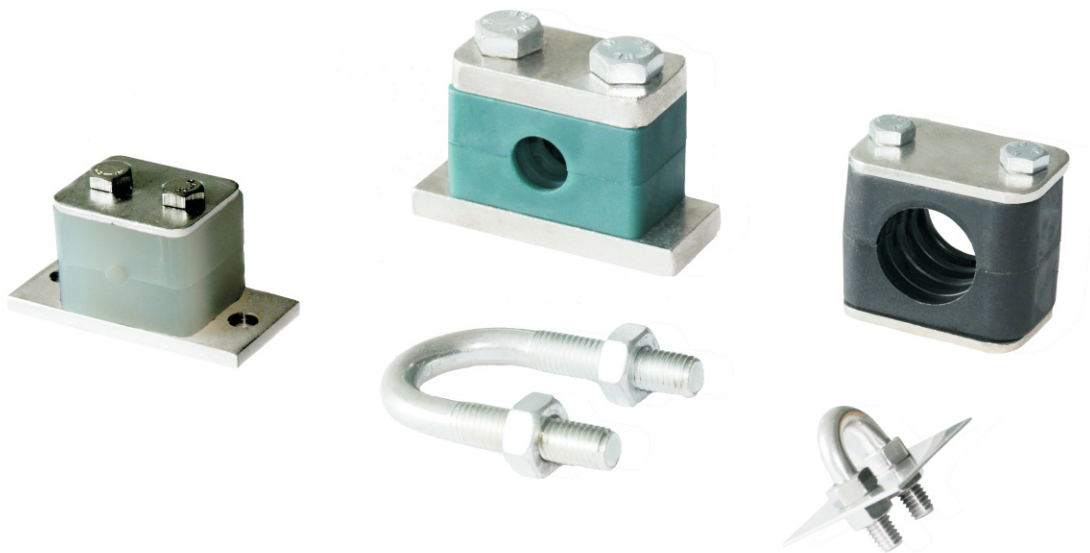


Tube Clamps

FC and CS Series



FITOK
Valves and Fittings

www.fitokgroup.com

FC Series

Steel Strip and U-bolt Clamps

Features

- ⦿ Designed according to DIN standard
- ⦿ Tube or pipe O.D. size range: 5.5 mm to 61 mm
- ⦿ Tube or pipe application
- ⦿ Vibration-proof and noise-proof design
- ⦿ All marked with type and dimension

Technical Data:

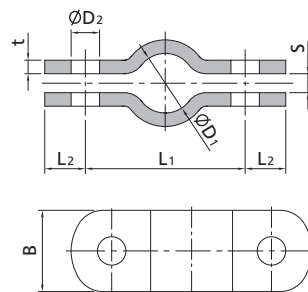
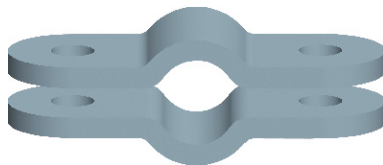
Material	Designator	Temperature Range
321 SS	S1	up to 426°C
304 SS	S4	
316 SS	SS	
Carbon Steel	CS	up to 400°C

Ordering Information:

Add material designator as a prefix to the basic ordering number to complete ordering number. **For example: S4-FC1-27**
 Dimensions in mm unless otherwise specified.

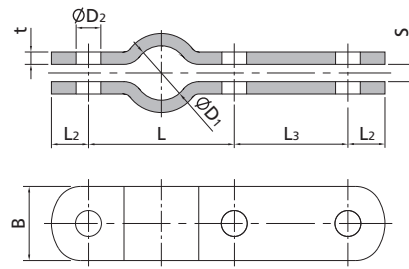
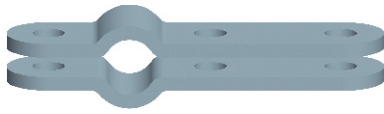
Dimensions

FC1 Series



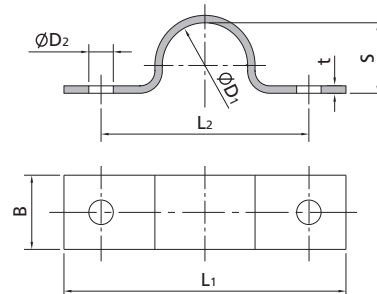
ØD ₁	For Tube and Pipe Outside Diameter	Basic Ordering Number	L ₁	L ₂	t	S	ØD ₂	B
20	18 to 20	-FC1-20	57	15	5	7	11.5	30
22	20 to 22.2	-FC1-22	59					
25	23 to 25	-FC1-25	62					
27	25 to 27	-FC1-27	66					
30	28 to 30.1	-FC1-30	68					
34	32 to 34	-FC1-34	72					
38	36 to 38.1	-FC1-38	76					
43	41 to 43	-FC1-43	82					
45	43 to 45	-FC1-45	84	18	6	9	14	40
49	48 to 50.8	-FC1-49	88					
57	55 to 57	-FC1-57	104					
60	58 to 60	-FC1-60	108					

FC2 Series



ØD ₁	For Tube and Pipe Outside Diameter	Basic Ordering Number	L ₁	L ₂	L ₃	t	S	ØD ₂	B
20	18 to 20	-FC2-20	57	15	46	5	7	11.5	30
22	20 to 22.2	-FC2-22	59						
25	23 to 25	-FC2-25	62						
27	25 to 27	-FC2-27	66						
30	28 to 30.1	-FC2-30	68						
34	32 to 34	-FC2-34	72						
38	36 to 38.1	-FC2-38	76						
43	41 to 43	-FC2-43	82						
45	43 to 45	-FC2-45	84	18	54	6	9	14	40
49	48 to 50.8	-FC2-49	88						
57	55 to 57	-FC2-57	104						
60	58 to 60	-FC2-60	108						

FC3 Series



ØD ₁	For Tube and Pipe Outside Diameter	Basic Ordering Number	L ₁	L ₂	S	ØD ₂	t	B
7	5.5 to 7	-FC3-7	44	28	5	6.6	2	16
9	7 to 9	-FC3-9	48	32	6			20
13	9.5 to 13	-FC3-13	52	36	9			20
15.5	13 to 15.5	-FC3-15.5	56	40	12			20
19	15.5 to 19	-FC3-19	60	44	15			20
23	20 to 23	-FC3-23	82	56	19	11	3	25
26	23 to 26	-FC3-26	84	58	22			
28.5	26 to 28.5	-FC3-28.5	90	64	24			
32	28.5 to 32	-FC3-32			27			
36	33 to 36	-FC3-36			32			
39	36 to 39	-FC3-39	110	84	34	14	5	30
43	39 to 43	-FC3-43	120	88	38			
46	43 to 46	-FC3-46	122	90	41			
49	48 to 50.8	-FC3-49			44			
58	55 to 58	-FC3-58			52			
61	58 to 61	-FC3-61	142	110	57	40		

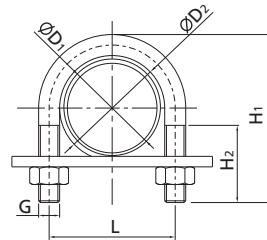
3 Tube Clamps

FC4 Series



ØD ₁	For Tube and Pipe Outside Diameter	Basic Ordering Number	L ₁	L ₂	L ₃	H	ØD ₂	t	B
7	5.5 to 7	-FC4-7	26	14	31.5	5	6.6	2	16
9	7 to 9	-FC4-9	28	16	34.5	6			20
13	9.5 to 13	-FC4-13	30	18	38.5	9			
15.5	13 to 15.5	-FC4-15.5	32	20	41.75	12			
19	15.5 to 19	-FC4-19	34	22	45.5	15			
23	20 to 23	-FC4-23	43	28	57.5	19	9	3	25
26	23 to 26	-FC4-26	44	29	60	22			
28.5	26 to 28.5	-FC4-28.5	47	32	64.25	24			
31	28.5 to 31	-FC4-31			65.5	27			
33	31 to 33	-FC4-33	56	36	75.5	29			
36	33 to 36	-FC4-36	57	40	78	32	11	3	30
39	36 to 39	-FC4-39	59	42	81.5	34			
43	39 to 43	-FC4-43	61	44	85.5	38			
46	43 to 46	-FC4-46	62	45	88	41			
49	46 to 49	-FC4-49	67	48	95.5	44			
52	49 to 52	-FC4-52	72	53	102	47	14	4	40
58	55 to 58	-FC4-58	74	55	107	52			
61	58 to 61	-FC4-61	77	58	111.5	56			

FC5 Series



Nominal Width	ØD ₂	Basic Ordering Number	ØD ₂	L	H ₁	H ₂	G	FC5 Kits
DN20	25	-FC5-30	30	40	70	40	M10	U-shaped bolt (1 piece) Nut (2 pieces)
	26.9							
DN25	30	-FC5-38	38	48	76	50		
	33.7							
DN32	38	-FC5-46	46	56	86	50		
	42.4							
DN40	44.5	-FC5-52	52	62	92	50		
	48.3							
DN50	57	-FC5-64	64	76	109	50	M12	
	60.3							
DN65	76.1	-FC5-82	82	94	125	50	M12	
DN80	88.9	-FC5-94	94	106	138	50		
DN100	108	-FC5-120	120	136	171	60	M16	
	114.3							
DN125	133	-FC5-148	148	164	191	60		
	139.7							

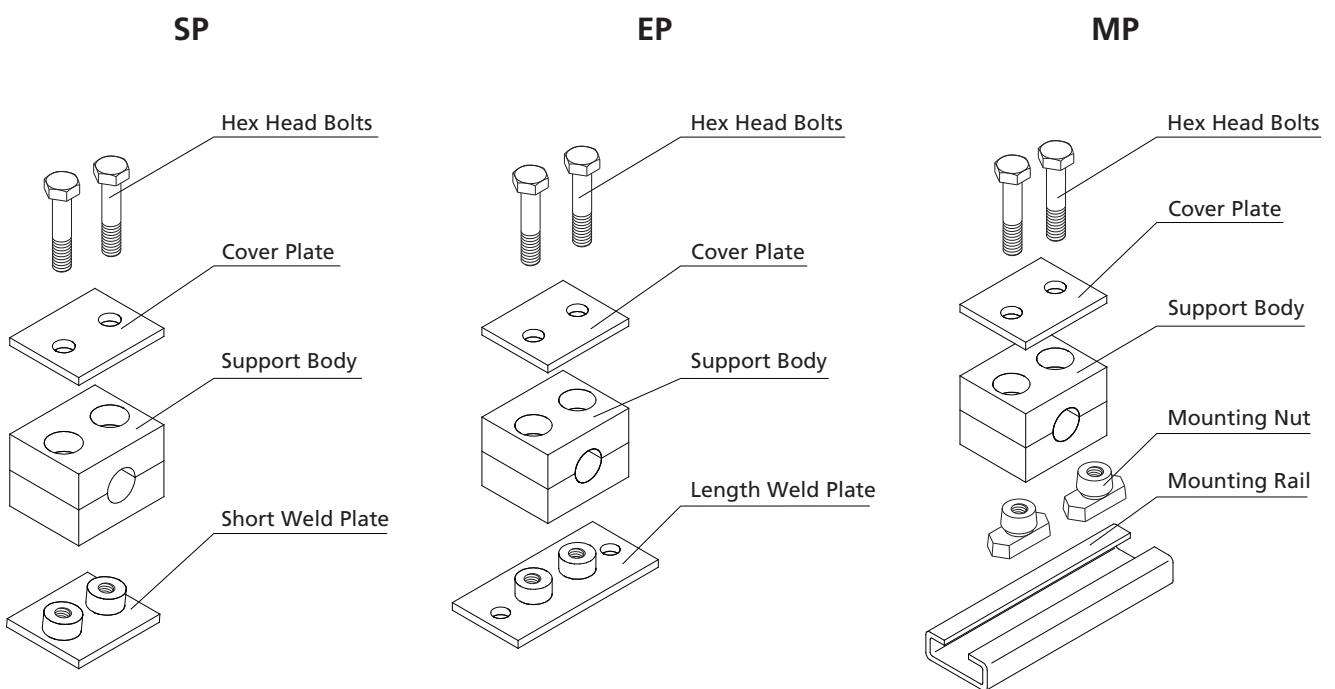
CS Series

Bolted Plastic Clamp Supports

Features

- ⦿ Comply with DIN 3015 - 1
- ⦿ Resist chemical corrosion
- ⦿ Resist ultraviolet radiation
- ⦿ Enhance system reliability
- ⦿ Vibration-proof and noise-proof design

Types

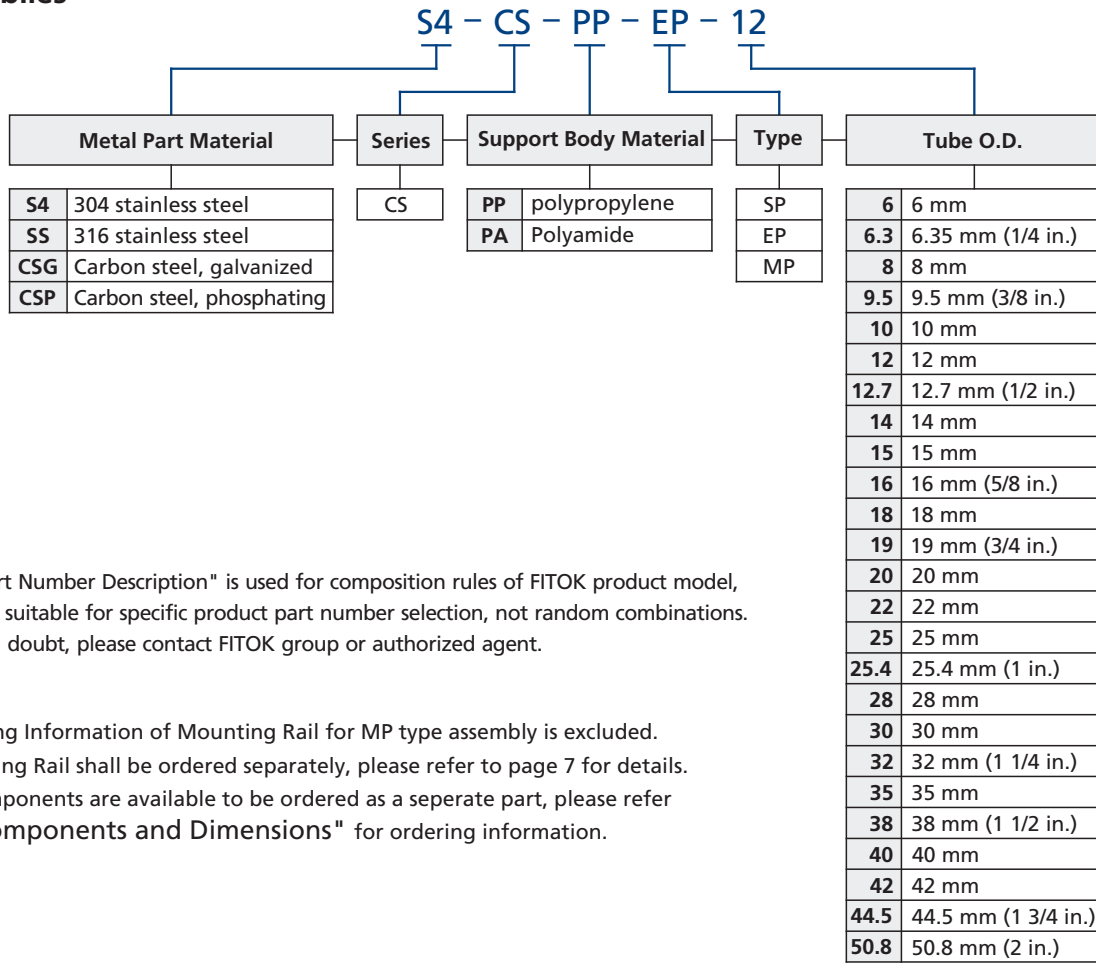


Materials

Component	Material	Designator	Temperature Range
Support Body	polypropylene	PP	-30°C to 90°C
	Polyamide	PA	-40°C to 120°C
Others (Metal Parts)	304 stainless steel	S4	—
	316 stainless steel	SS	
	Carbon steel, galvanized	CSG	
	Carbon steel, phosphating	CSP	

Part Number Description

Assemblies

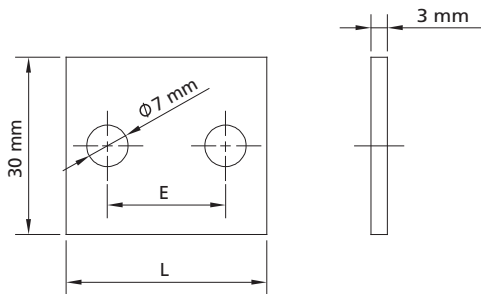


Note: "Part Number Description" is used for composition rules of FITOK product model, Not suitable for specific product part number selection, not random combinations. If in doubt, please contact FITOK group or authorized agent.

- Ordering Information of Mounting Rail for MP type assembly is excluded. Mounting Rail shall be ordered separately, please refer to page 7 for details.
- All components are available to be ordered as a separate part, please refer to "Components and Dimensions" for ordering information.

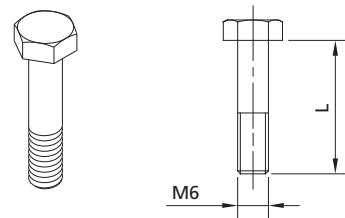
Components and Dimensions

Cover Plates



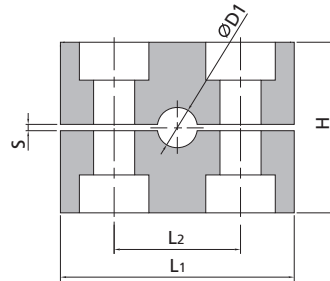
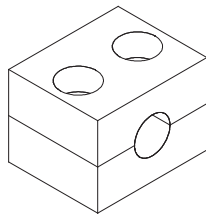
Tube O.D. (mm)	Basic Ordering Number	L (mm)	E (mm)
6 ~ 12	-CS-GP1	34	20
12.7 ~ 18	-CS-GP2	40.5	26
19 ~ 25.4	-CS-GP3	48	33
28 ~ 30	-CS-GP4	57	40
32 ~ 42	-CS-GP5	70	52
44.5 ~ 50.8	-CS-GP6	86	66

Hex Head Bolts



Tube O.D. (mm)	Basic Ordering Number	L (mm)
6 ~ 12	-CS-M6 × 30	30
12.7 ~ 18	-CS-M6 × 35	35
19 ~ 25.4	-CS-M6 × 40	40
28 ~ 30	-CS-M6 × 45	45
32 ~ 42	-CS-M6 × 60	60
44.5 ~ 50.8	-CS-M6 × 70	70

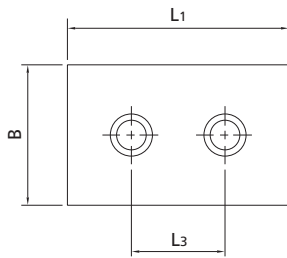
Support Bods



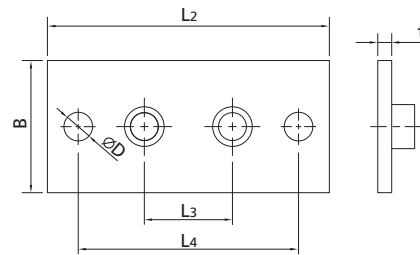
Tube O.D. $\varnothing D_1$ mm (in.)	Basic Ordering Number	L1	L2	H	S min.	Width
6	-CS-SB6	37	20	27	0.4	30
6.35 (1/4)	-CS-SB6.3					
8	-CS-SB8					
9.5 (3/8)	-CS-SB9.5					
10	-CS-SB10					
12	-CS-SB12					
12.7 (1/2)	-CS-SB12.7	42	26	33	0.6	
14	-CS-SB14					
15	-CS-SB15					
16 (5/8)	-CS-SB16					
18	-CS-SB18					
19 (3/4)	-CS-SB-19	50	33	35		
20	-CS-SB20					
22	-CS-SB22					
25	-CS-SB25					
25.4 (1)	-CS-SB25.4					
28	-CS-SB28	59	40	42		
30	-CS-SB30					
32 (1 1/4)	-CS-SB32	71	52	58	0.8	
35	-CS-SB35					
38 (1 1/2)	-CS-SB38					
40	-CS-SB40					
42	-CS-SB42					
44.5 (1 3/4)	-CS-SB44.5					
50.8	-CS-SB50.8	86	66	66		

7 Tube Clamps

Weld Plates



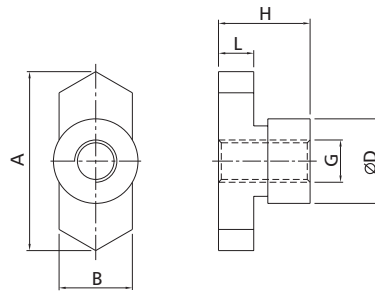
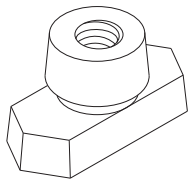
Short Weld Plate



Long Weld Plate

Tube O.D. $\varnothing D_1$ mm (in.)	Basic Ordering Number (For Short Weld Plate)	Basic Ordering Number (For Long Weld Plate)	L1	L2	L3	L4	B	$\varnothing D$	t
6 ~ 12	-CS-SP1	-CS-EP1	36	64	20	50	30	6.5	3
12.7 ~ 18	-CS-SP2	-CS-EP2	42	70	26	56			
19 ~ 25.4	-CS-SP3	-CS-EP3	50	78	33	64			
28 ~ 30	-CS-SP4	-CS-EP4	60	87	40	73			
32 ~ 42	-CS-SP5	-CS-EP5	71	100	52	86			
44.5 ~ 50.8	-CS-SP6	-CS-EP6	88	115	66	100			

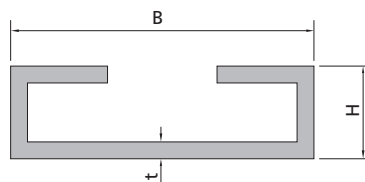
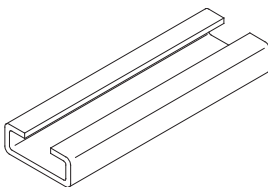
Mounting Nut



Basic Ordering Number	A	B	H	L	G	$\varnothing D$
-CS-SM	25	10.4	13	5	M6	12

Option

Mounting Rail



Basic Ordering Number	t	B	H	Length (mm)
-CS-MR11-L	2	28	11	L (upon request)
-CS-MR14-L	2	28	14	
-CS-MR30-L	2	28	30	

FITOK Group

FITOK GmbH (Headquarter)

Sprendlinger Landstr. 115, 63069 Offenbach am Main, Germany
Tel.: +49 69 8900 4498 Fax: +49 69 8900 4495

FITOK, Inc.

13843 North Promenade Blvd., Suite 750, Stafford, Texas 77477, USA
Tel.: +1 281 888 0077 Fax: +1 281 582 4051

FITOK Incorporated

1-4F, Block C, Zone E, Yingtailong Industrial Park, Dalang Street,
Longhua District, Shenzhen, 518109, China
Tel.: +86 755 2803 2500 Fax: +86 755 2803 2619

FITOK Middle East Oil Equipment Trading LLC

208-209, Makateb Tower, Airport Road, P.O.Box 185412, Deira, Dubai, UAE
Tel.: +971 4 2959 853 Fax: +971 4 2959 854

info@fitokgroup.com
www.fitokgroup.com

FK-IC-GO-06-EN-140821