

FAUDI Aviation Filter-Monitors

Safety first on Mobile Refuelling Equipment

They are simple compact units which can easily be installed and serviced. They are developed in particular for mobile fuelling installation. Monitor elements fulfil several functions which provide an important contribution to aircraft safety.

The FAUDI Aviation door interlock system is an additional safety device designed to prevent closure of the door or cover should the full amount of monitor elements not be fitted. The fuel flows through the elements from outside to inside at a maximum flow rate of 3.8 l/min (1.0 USGPM/inch) of element length.

The element diameter is nominally

2" Filter Monitors

The nominal filtration efficiency is 1 micron and free water in the effluent is reduced to around 5 ppm. The maximum design pressure of the monitor elements is 12 bar.

Construction

Standard version

- Design pressure: 12 bar at up to 50°C
 - Design code: AD 2000 (German regula-)
 - Material of construction: Carbon steel
 - Internal coating: MIL-C-4556 (latest ed.)
- Other design pressures as well as other materials like aluminium or stainless steel are available upon request.

Accessories

For improved operation FAUDI Aviation Filter Monitors may fitted with some or all of the following accessories.

- Automatic air eliminator
- Differential pressure gauge
- Pressure relief valve

Concept & Performance

- Horizontal mode
- Standard range - for optimum cost/performance ratio
- Quick delivery
- International standards
 - ▶ ASME Code, Section VIII with or without U-stamp
 - ▶ BS 5500
 - ▶ Stoomwezen
 - ▶ DNV, etc.
- Research and development competence
- In house test facilities for full scale vessel and single element testing
- Service



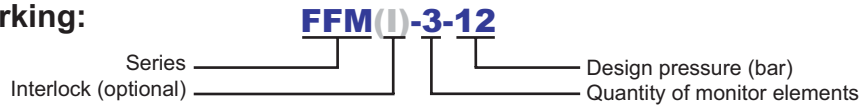
FAUDI Aviation GmbH & Co. KG
Scharnhorststrasse 7 B
D-35260 Stadtallendorf

Phone: +49 6428 4465 - 275
Fax: +49 6428 4465 - 231
E-Mail: contact@faudi-aviation.com
Web: www.faudi-aviation.com

FAUDI
aviation
quality guarantees safety

FAUDI Aviation Filter-Monitors

Sample of marking:

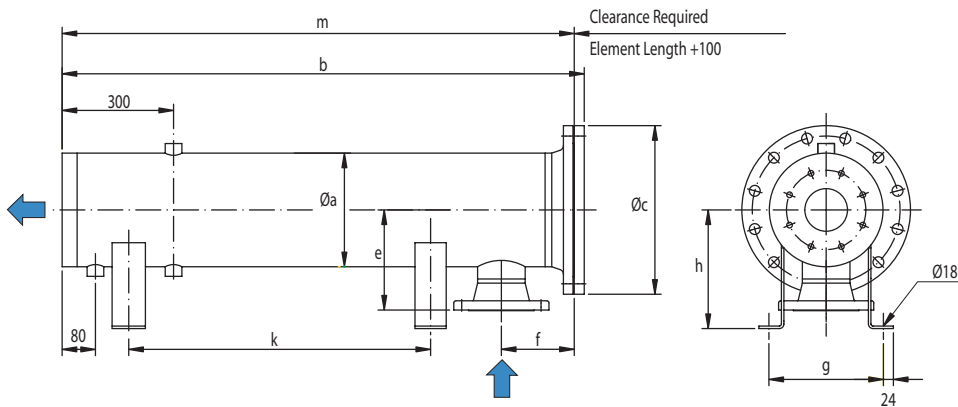


Technical Details

- for mobile application
- according to API/IP 1583, 4th Edition.
- for Jet A1, JP 1, JP 4, JP 8, kerosene
- maximale flow rates up to 5.300 l/min, higher flow rates on request

Model No.	Element length	Max Flow Rate		Volume l	Weight app. kg
	(mm)	l/min	USGPM		
FFM- 3	770	340	90	22	40
FFM- 5	770	568	150	41	60
FFM- 7	770	795	210	64	65
FFM- 9	770	1022	270	64	90
FFM-12	770	1363	360	96	130
FFM-19	770	2157	570	96	130
FFM-21	770	2385	630	161	170
FFM-29	770	3293	870	204	220
FFM-38	770	4315	1140	257	250
FFM-47	770	5337	1410	370	330

Dimensions



Model No.	Connections			Ø a	FFM b	FFMI b	Ø c	e	f	g	h	k	l	FFM m	FFMI m
	DIN	ANSI	TW												
FFM- 3	40	1 ½"	-	140	1080	1180	250	170	110	160	205	220	685	1055	1155
FFM- 5	50	2"	65	168	1115	1235	285	175	120	180	210	210	660	1090	1210
FFM- 7	65	2 ½"	65	219	1190	1235	340	210	150	230	250	250	700	1165	1205
FFM- 9	80	3"	80	219	1190	1235	340	210	150	230	250	250	700	1165	1205
FFM-12	100	4"	100	273	1260	1300	395	242	175	275	285	285	725	1230	1270
FFM-19	125	5"	125	273	1275	1335	395	245	180	275	295	295	725	1245	1305
FFM-21	125	5"	125	324	1310	1375	445	255	200	320	305	305	740	1280	1355
FFM-29	150	6"	150	356	1350	1375	505	283	200	360	335	335	760	1320	1350
FFM-38	150	6"	150	457	1315	1390	555	335	195	450	385	385	700	1290	1365
FFM-47	200	8"	-	508	1500	1530	610	365	200	500	420	420	740	1475	1500

FAUDI Aviation GmbH & Co. KG
 Scharnhorststrasse 7 B
 D-35260 Stadtallendorf

Phone: +49 6428 4465 - 275
 Fax: +49 6428 4465 - 231
 E-Mail: contact@faudi-aviation.com
 Web: www.faudi-aviation.com

