

FBO Filter Assembly



FBO-10



FBO-14



FBO-14-HTR

Racors FBO-10 and FBO-14 filter assemblies are designed to meet the toughest hydrocarbon refueling conditions and provide for ease of filter change outs. The FBO Assembly can flow 25 gpm (95 lpm) or up to 75 gpm (230 lpm) depending on the model, the elements installed and fuel being filtered. The FBO assembly can be used on mobile refuelers or installed in refueling cabinets. The unit can also be used for diesel fuel dispensing pumps or as a primary fuel filter/water separator for large diesel engines. The assembly features a locking ring

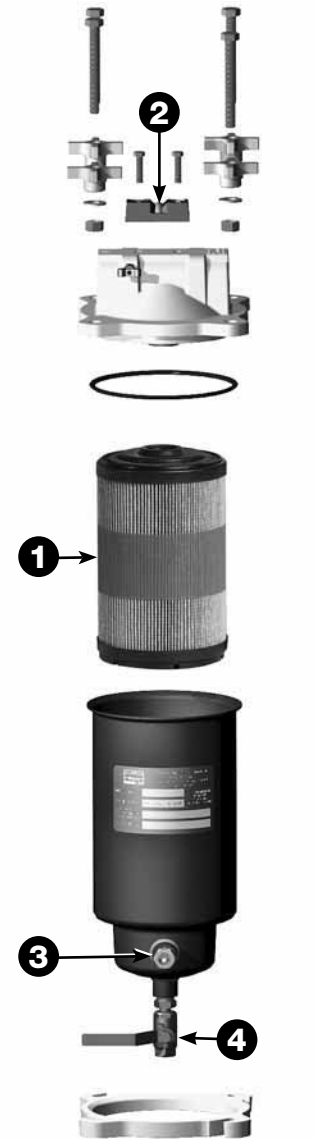
collar, which attaches the filter housing to the aluminum die-cast filter head with four bolts. The slotted locking ring collar allows maintenance personnel to hand-loosen the four collar bolts, rotate and lower the bowl assembly for element change outs. With new element installed, simply raise the bowl and rotate into position on the locking ring and hand tighten evenly. The closure hardware consists of stainless steel nuts, bolts and washers with metal hand knobs for ease of maintenance – one person can easily change the filter element. No wrenches or other special tools are required.

Applications:

- Jet fuel, aviation gas, diesel fuel, gasoline, kerosene, JP4, JP5 and JP8.
- Aviation fuel trucks.
- Aviation fueling cabinets.
- Diesel fuel dispensing system.
- Marine fuel docks.
- Fuel systems on large diesel engines.

FBO Assemblies

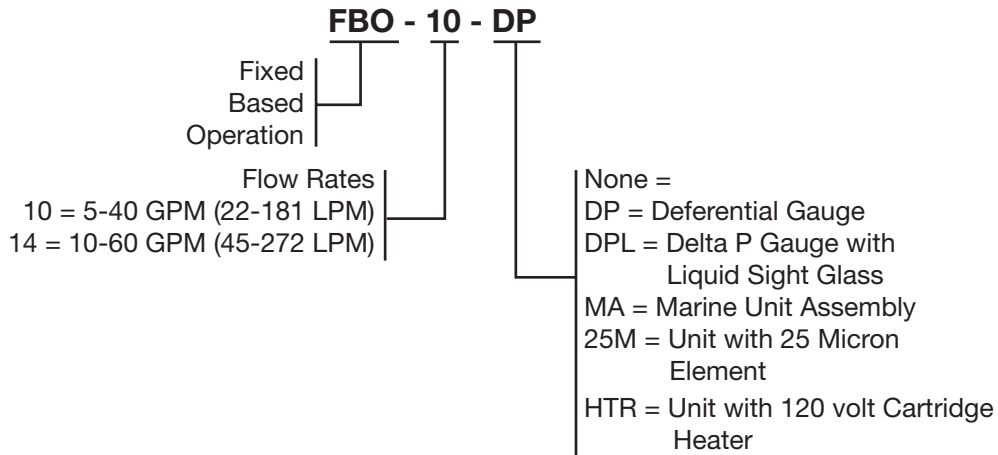
How to Order



Below is a guide to help customers order the right FBO assembly with the accessories you need.

Assembly	1 Element	2 Delta P Gauge	3 Sight Glass	4 Drain Valve
FBO-10	Order Separately			X
FBO-10-DP	Order Separately	X		X
FBO-10-DPL	Order Separately	X	X	X
FBO-10-25M	FBO-60332	X	X	X
FBO-14	Order Separately			X
FBO-14-DP	Order Separately	X		X
FBO-14-DPL	Order Separately	X	X	X
FBO-14-25M	FBO-60341	X	X	X
FBO-14-HTR	Order Separately	X	X	X

How to Order



E

Performance

FBO-10	Maximum Flow Rates				Clean Dry	Change
	Flow Range	Diesel	Jet Fuel	Gasoline	Delta P	Delta P
Prefilter	5-40 GPM (18.9-151.4 LPM)	20 GPM (75.7 LPM)	40 GPM (151.4 LPM)	50 GPM (189.3 LPM)	Varies w/fluid and flow rate.	20 PSID
Filter Sep	5-35 GPM (18.9-132.5 LPM)	18 GPM (68.1 LPM)	35 GPM (132.5 LPM)	45 GPM (170.3 LPM)	Varies w/fluid and flow rate.	15 PSID
Absorber	5-25 GPM (18.9-94.6 LPM)	18 GPM (68.1 LPM)	35 GPM (132.5 LPM)	45 GPM (170.3 LPM)	Varies w/fluid and flow rate.	30 PSID
FBO-14	Flow Range	Diesel	Jet Fuel	Gasoline	Delta P	Delta P
Prefilter	10-60 GPM (37.9-227.1 LPM)	30 GPM (113.6 LPM)	60 GPM (227.1 LPM)	75 GPM (283.9 LPM)	Varies w/fluid and flow rate.	20 PSID
Filter Sep	10-50 GPM (37.9-189.3 LPM)	25 GPM (94.6 LPM)	50 GPM (189.3 LPM)	65 GPM (246.1 LPM)	Varies w/fluid and flow rate.	15 PSID
Absorber	10-37 GPM (37.9-140.1 LPM)	26 GPM (98.4 LPM)	55 GPM (208.2 LPM)	70 GPM (265.0 LPM)	Varies w/fluid and flow rate.	30 PSID

FBO Assemblies

FBO-10 (6x10 in. Elements)

Coalescer Separator Kit	FBO 10654C	FBO 10658C	FBO-60328-V	FBO 10668C	FBO 10678C
Weight	4.0 lbs (1.8 kg)	4.0 lbs (1.8 kg)	4.0 lbs (1.8 kg)	4.0 lbs (1.8 kg)	4.0 lbs (1.8 kg)
Micron Rating	1	5	N/A	10	25

Prefilter Kits	FBO 10602FP	FBO 10604FP	FBO 10605FP	FBO 10607FP
Weight	4.0 lbs (1.8 kg)	4.0 lbs (1.8 kg)	4.0 lbs (1.8 kg)	4.0 lbs (1.8 kg)
Micron Rating	1	5	10	25

Monitor Kits	FBO 10601FW	FBO 10605FW	FBO 10610FW	FBO 10625FW
Weight	4.0 lbs (1.8 kg)	4.0 lbs (1.8 kg)	4.0 lbs (1.8 kg)	4.0 lbs (1.8 kg)
Micron Rating	1	5	10	25

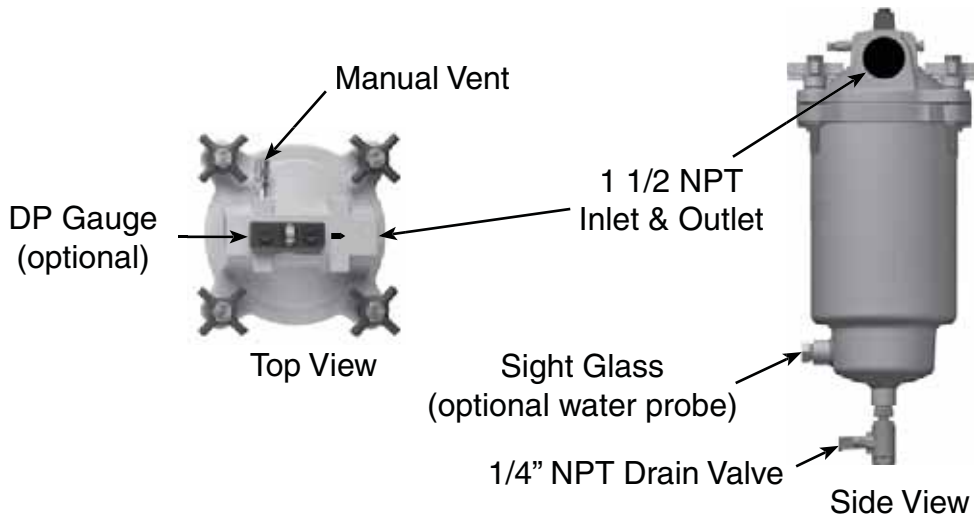
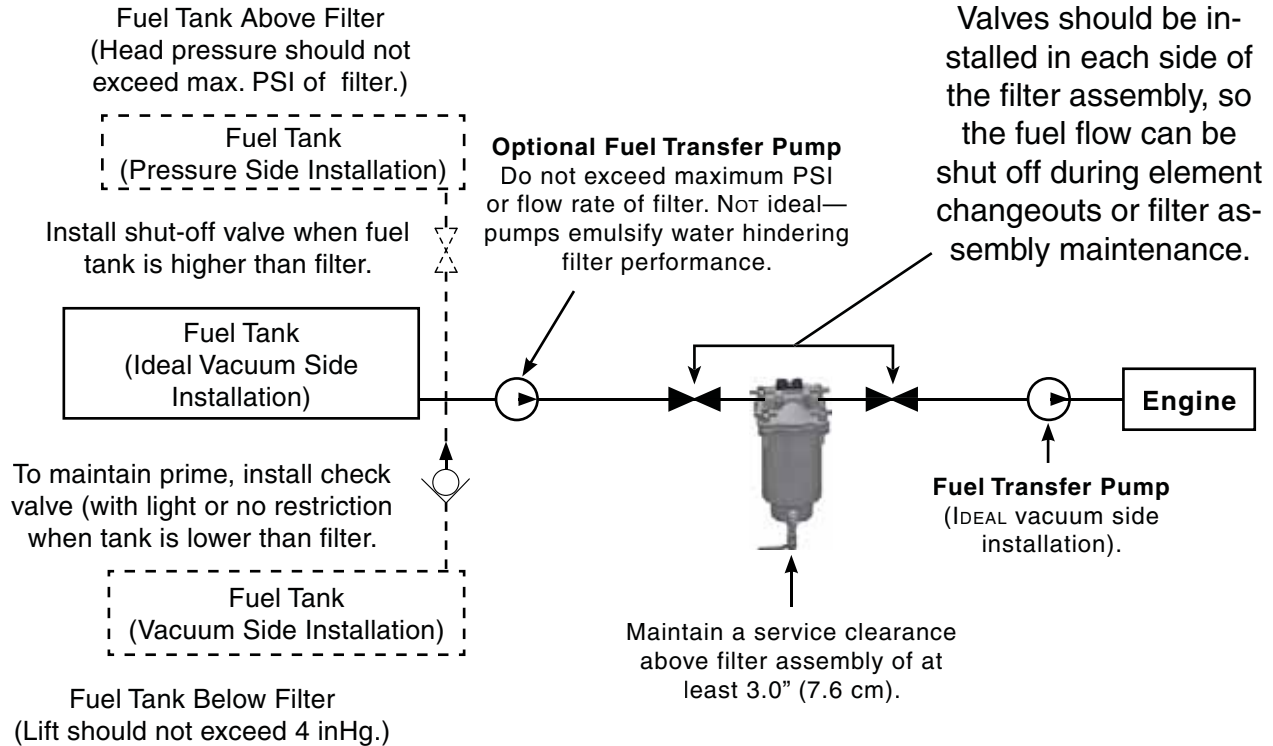
FBO-14 (6x14 in. Elements)

Coalescer Separator Kits	FBO 14654C	FBO 14658C	FBO 14668C	FBO 14678C
Weight	5.0 lbs (2.3 kg)	5.0 lbs (2.3 kg)	5.0 lbs (2.3 kg)	5.0 lbs (2.3 kg)
Micron Rating	1	5	10	25

Prefilter Kits	FBO 14501FP	FBO 14604FP	FBO 14605FP	FBO 14607FP
Weight	5.0 lbs (2.3 kg)	5.0 lbs (2.3 kg)	5.0 lbs (2.3 kg)	5.0 lbs (2.3 kg)
Micron Rating	1	5	10	25

Monitor Kits	FBO 14601FW	FBO 14605FW	FBO 1410FW	FBO 14625FW
Weight	5.0 lbs (2.3 kg)	5.0 lbs (2.3 kg)	5.0 lbs (2.3 kg)	5.0 lbs (2.3 kg)
Micron Rating	1	5	10	25

Mounting Information



E

FBO Assemblies

Replacement Parts

FBO-10 and FBO-14

	Part Number	Description
1.	72712	Handle Assembly
2.	Differential Pressure Gauge (DP Gauge) 72694 72783	15 PSI Gauge Kit 30 PSI Gauge Kit
3.	FBO Head Kits 72531	Head Kit with DP Gauge
4.	72699	O-ring
5.	72806	FBO-10 Housing Assembly (includes #'s 5 & 8)
8)	73166	FBO-14 Housing Assembly (includes #'s 5 & 8)
6.	72710	1/2 " NPT Sight Glass
7.	71943-.25	1/4 " NPT Ball Valve
8.	72532	Flange
	7581	Installation Instructions

Optional Parts (not shown)

73231 1/2" DIA. 120 volt Cartridge Heater



(optional) WIF Probe
RK 30880

1 1/2" NPT Inlet
and Outlet Ports



FBO Head

